

VK port-a-log – A brief guide.

Version Warburton_01

Disclaimer: This Android application is provided "as is" without warranty of any kind, either express or implied, including without limitation any implied warranties of condition, uninterrupted use, merchantability, fitness for a particular purpose, or non-infringement.

VK port-a-log is an Android application written by Peter VK3ZPF to assist with logging functions associated with SOTA, HEMA, WWFF, SiOTA, VK Shires and portable activations. The application has been written for use on Android phones and tablets. VK port-a-log is suitable for Android version 5.0 or later, but works best on Android version 8.0 or later.

****All prior logs should be copied from the Android device before installing a new version – just to be sure!**

VK port-a-log versions before V20191026_01, including Moondarra, must be uninstalled before installing this version. All user data will need to be re-entered after installation.

Gisborne_01, Gisborne_02 and Tarrengower_01 versions do not need to be uninstalled.

Most functions of the application should be self-evident.

Log entry cannot be saved if critical QSO data, such as call sign, frequency and mode are missing or not of the correct format or length.

Log files can be copied or emailed using third party apps such as Cx File Explorer



Your device may prompt for permission to install from an unknown source. This can be set from the on-screen prompt or at **Settings/Security/unknown sources**

SOTAwatch and ParksPeaks spot notifications

Your activation references are shown here. Tap here to view all references. See 'Activation Details'

Tap to access menu options (see figures 4 & 18) May be 'soft key' at bottom left or right on some devices. May also look like ☰ on some devices

Your Maidenhead locator – use Location menu option to derive from GPS. (locator on screen and in ADIF log) and GPS coordinates (in ADIF log only)

Tap button to enter up to 5 call signs during pile up. First call sign entered is copied to Pile up screen (x) shows number of call signs in pile up screen. See figure 3

Clears entered QSO data

Common call sign suffixes

Current activation QSO summary

QSO info panel scrolls up and down – See figure 2

Hot keys – can be VK call prefix, numbers 0 - 9 or user defined
Change format in 'Logger Settings' or tap and hold VK1 key to change format

Log of contacts for today. Can be scrolled up and down. Latest QSO always on top.
Collapse keyboard to see more QSOs.
Tap a QSO to edit contact.
Tap and hold a QSO to delete contact.

Figure 1 - Main screen

Call: / /P /M

Sent: 59 Rec'd: 59

Name:

QTH:

Frequency (MHz)

Mode: SSB Power:

SOTA ref: XXX / XX - 000

WWFF ref: VKFF - 0000

HEMA ref: XXX / XXX - 000

SiOTA ref: VK - XXXn

Grid: XXnnYYnn

VK Shires ref: XX0

Notes:

QSL message: Thanks for the QSO.

Figure 2 – QSO details

To speed up recurring entries, line four can be set to any of the following fields;
 QTH, SOTA ref, HEMA ref, WWFF ref, SiOTA ref, Gridsquare, VK Shires ref.

Tap and hold on the text, i.e. **QTH**, to change or
 'Logger settings, Miscellaneous settings, Logger line 4 options'

Tap in each field to enter QSO details.

Swipe up to access SOTA, HEMA, WWFF, SiOTA, and VK Shires, Notes and QSL message fields.

Default Sent and Received RS(T) can be set in 'Logger Settings'.

Name will be populated from names.csv file if available

Call signs beginning with AX will use the name from the same VK call sign if available

Frequency can be kHz or MHz see 'Logger settings, Miscellaneous logger settings, Log frequency in kHz'

Slashed zero in call can be set in 'Logger settings, Miscellaneous logger settings, Slashed zero'

Call, Frequency, and Mode are mandatory fields.

Maximum field lengths:

Call	20
RS(T)	10
Name	25
QTH	100
Frequency	10
Mode	5
Power	4
Notes	200
QSL message	200

Entries more than the maximum length are truncated.

SOTA, HEMA, WWFF, SiOTA, and VK Shires references must be in the correct format as shown.

Default received WWFF and SiOTA reference prefixes can be set in 'Logger settings'

A SOTA chaser entry is created when a SOTA reference is entered.

QSL message format can be set in 'Logger setting, ADIF options'

All QSO details are available in the ADIF export file.

Mandatory fields are highlighted until completed.

Save button changes from red to green when ready to save QSO.

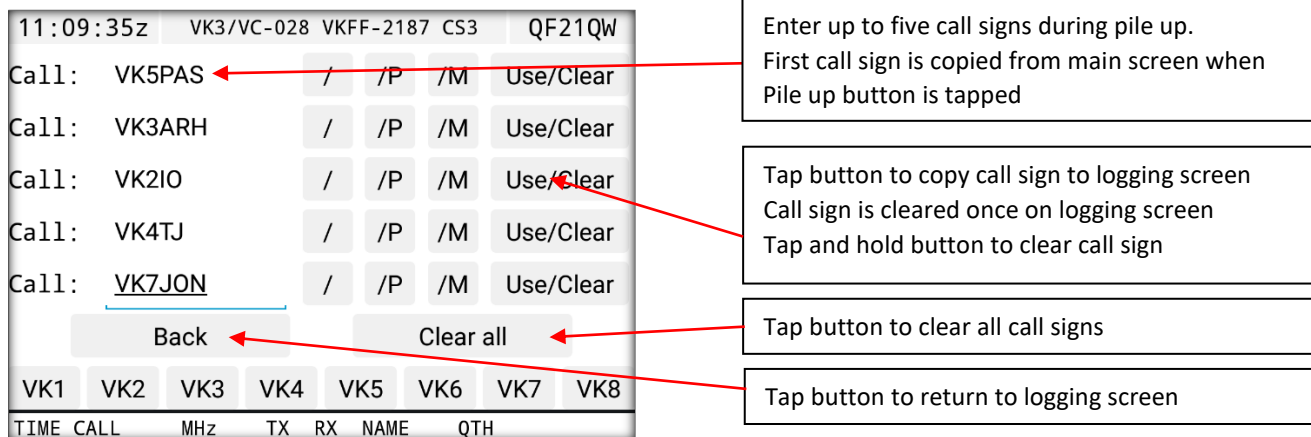


Figure 3 – Pile up screen

A names file is included on your device at **Main storage/VKportalog/names/names.csv**

This file retains the operator’s name of each call sign worked where the name has been entered. This file may be edited with a simple text editor to add names. Please keep the format as shown below

Call,Name

VK3ZPF,Peter

VK3ARH,Allen

VK3KAB,Kevin

VK port-a-log will pre-fill the name on the logger screen if the name is already stored in names.csv.

If you change this name in the logger screen you are prompted if you wish to save the change.

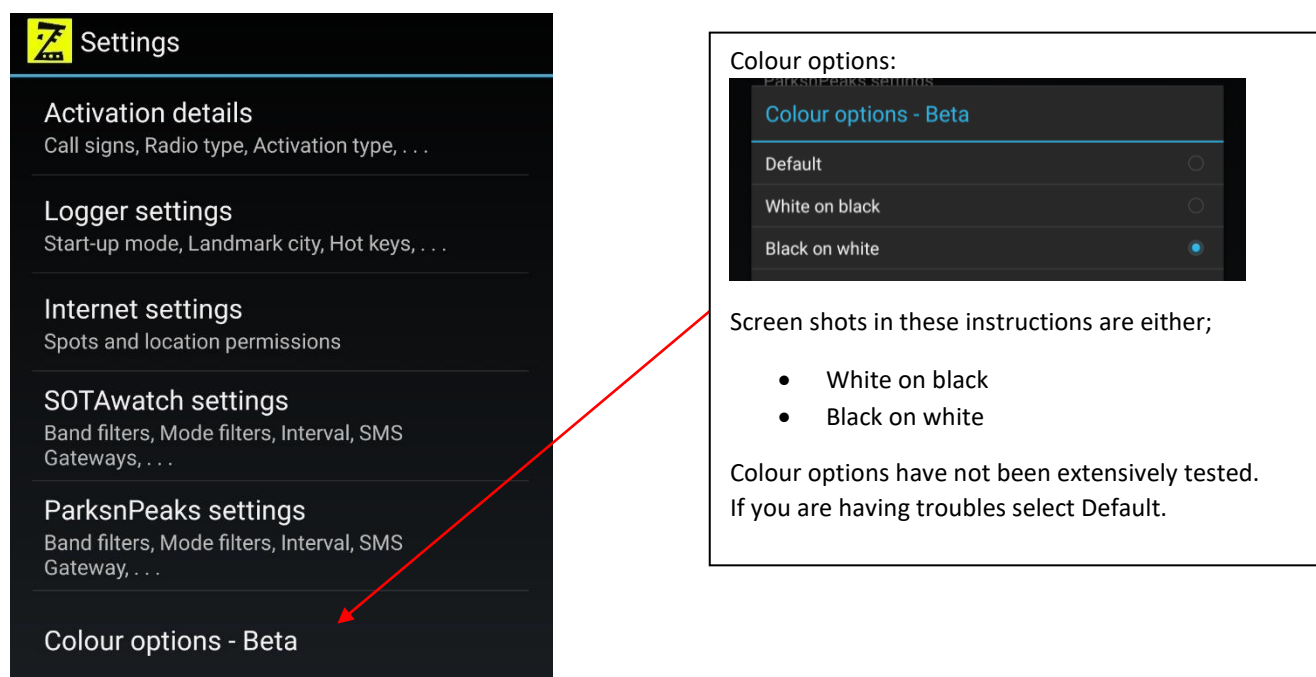


Figure 4 – Settings – Main options

The screenshot shows the 'Activation details' settings screen. The fields and their corresponding callouts are as follows:

- Your normal licensed call sign**: Points to the 'Operator's call sign' field.
- The call sign used on air during the activation**: Points to the 'On-air call sign' field.
- Select appropriate activation type**: Points to the 'Activation type' field. This callout includes a list of activation types and their associated log files:
 - SOTA makes SOTA CSV and ADIF files
 - HMEA makes ADIF log file
 - Portable makes ADIF log file
 - QTHR makes ADIF log without GPS info or locator
 - A SOTA CSV file is made if any SOTA station is worked regardless of activation type
- Check if activating a WWFF area**: Points to the 'WWFF activation?' checkbox. Callout: 'Creates a separate WWFF ADIF activator file for each WWFF area activated each day.'
- Check if activating a SiOTA silo**: Points to the 'SiOTA activation?' checkbox. Callout: 'Creates a separate SiOTA ADIF activator file for each SiOTA silo activated each day.'
- Check if activating a VK Shires area**: Points to the 'VK Shires activation?' checkbox. Callout: 'Reference used for logging and spots.'
- Activation references must be in the correct format**: Points to the reference fields. Callout includes a table of correct formats:

WWFF	VKFF-0876
SOTA	VK3/VC-025
HEMA	VK3/HVC-067
SiOTA	VK-WRC3
VK Shires	CS3

Figure 5 – Settings – Activation details

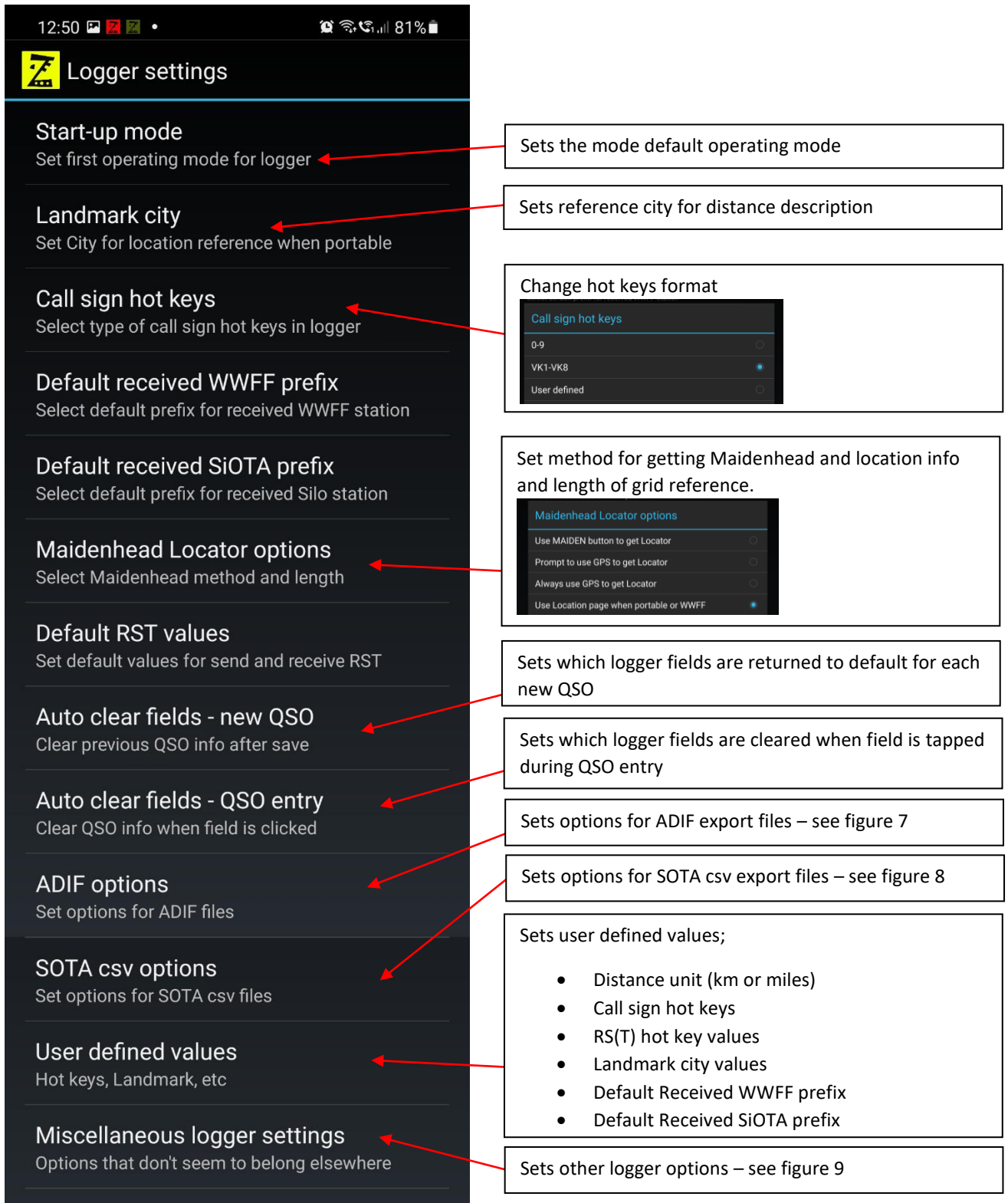


Figure 6 – Settings – Logger Settings

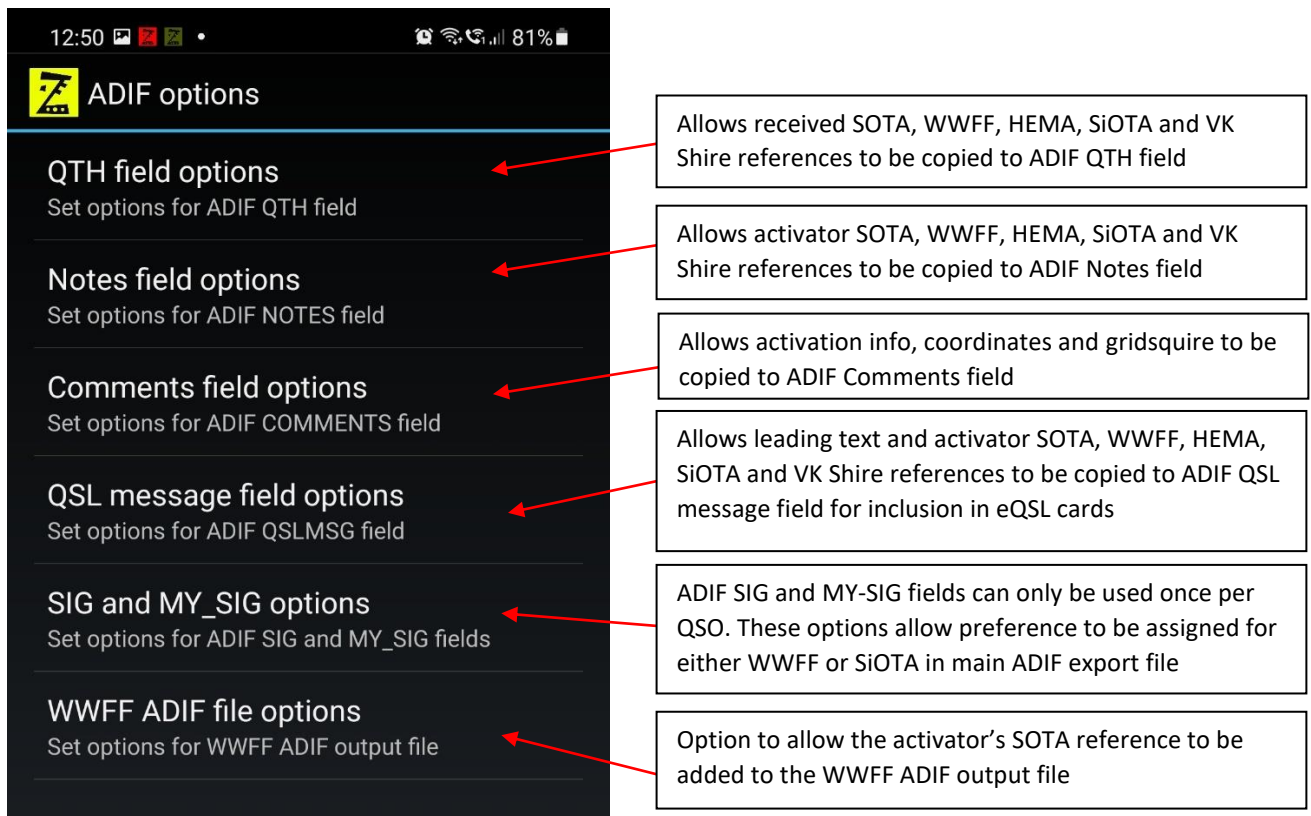


Figure 7 – ADIF options

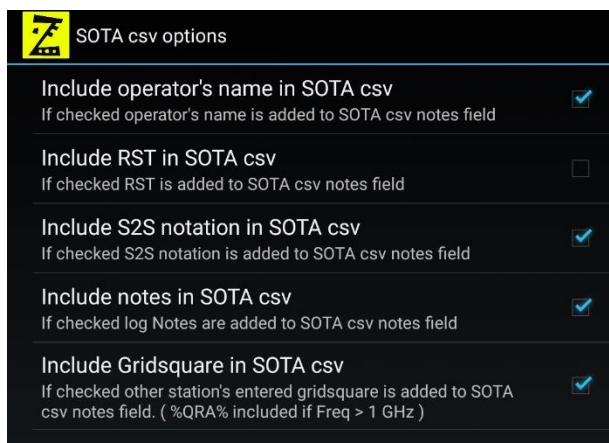


Figure 8 – SOTA csv options

Miscellaneous logger settings

- Autosave operator's name** Save the name of other station for later recall
- Mandatory Field RF power** If checked, RF power must be entered before saving QSO
- Hide all Hot Keys** If checked, all Hot Keys are removed from view
- Allow RST Hot Keys** If checked, Hot Keys can be used for RS(T) values
- Allow non-numeric RST values** If checked, non-numeric RST can be entered
- Log frequency in kHz** If checked, log frequency field is in kHz
- Full keyboard for frequency** If checked, app uses full keyboard for frequency entry
- Keep display on** Display will stay on until power button is pressed or another app is displayed - may considerably shorten battery life
- Display on-air call sign** If checked your on-air call sign shows at the top logging screen
- Show my refs one per view** If checked activation references are shown one per view
- Display prior reference/s** If checked shows the SOTA, WWFF and VK shire reference, if available, from the last QSO on the same local day
- Logger line 4 options** Select QTH, SOTA, WWFF, HEMA, SiOTA, Gridsquare or VK Shires reference on logger line 4
- QSO log column 6 options** Select Name or Mode in QSO log column 6
- Move messages** Moves app messages to top of log listing
- Hide non-error messages** Hide information messages that are not error messages
- Show spots in colour** Show spots in red for < 15 minutes, orange 15 - 30 minutes
- Slashed zero** Show slashed zero (Ø) in callsign

Most of these options are self-explanatory. None of them are essential for basic logging.

When checked the on-air call sign is shown at the top of the screen. The distance to landmark info shown on the Summary screen

When checked the last SOTA, WWFF or VK shire reference/s logged for the entered callsign on the same local day is offered for faster entry.

Frequency (MHz) 7.090
 Mode: SSB Power: 50 Summary

VK3PF 29-01-2020 0944z	SOTA VK3/VE-138	WWFF VKFF-2400	VK Shire TS3	Close
------------------------------	--------------------	-------------------	-----------------	-------

Tap reference to copy it to the log entry – tap again to remove it from the log entry – edit in log if required.

Offers seven options for line 4 of the logging screen.

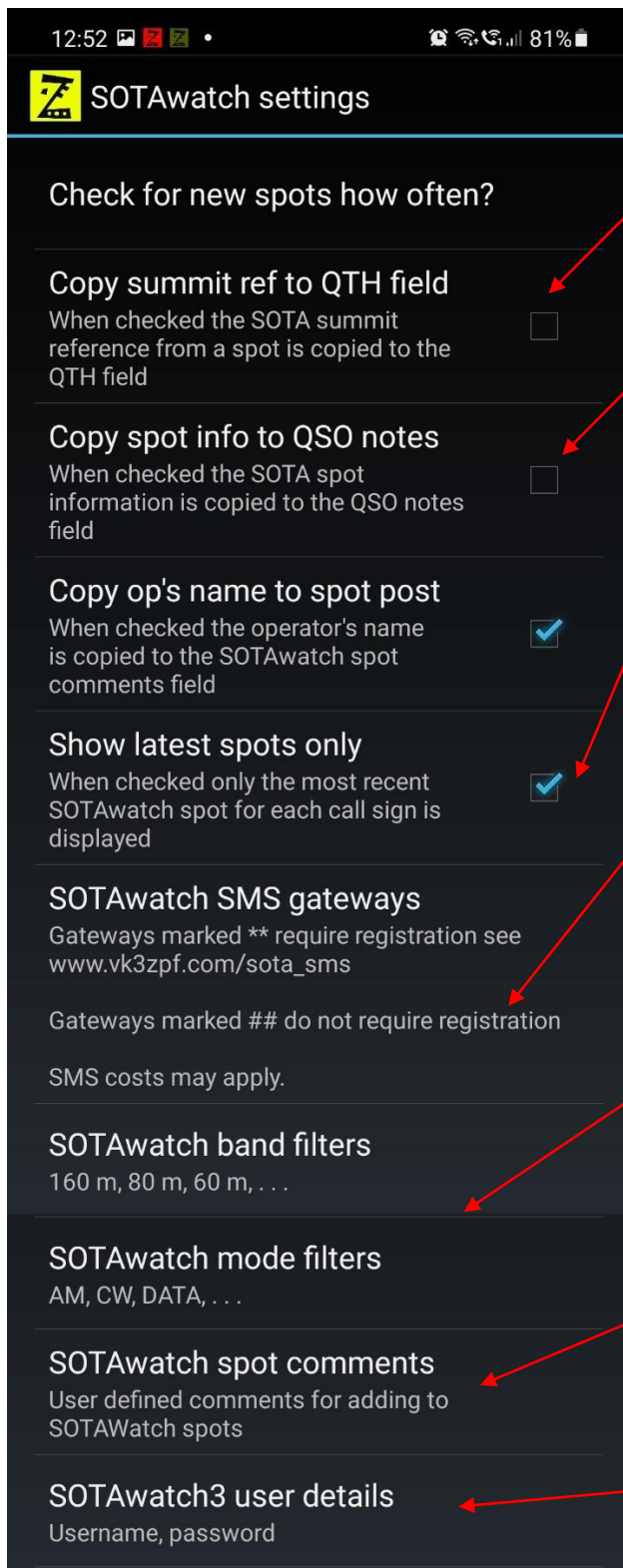
Call: VK2IQ / /P /M Pile up (0)
 Sent: 59 Rec'd: 59
 Name: Gerard Clear data
 QTH: Line 4 Save
 Frequency (MHz) 7.144
 Mode: SSB Power: 100 Summary

Change column 6 of the QSO log to show Name or Mode.

VK1	VK2	VK3	VK4	VK5	VK6	VK7	VK8
TIME	CALL	MHz	TX	RX	NAME	QTH	
0707	VK4FDJL	7.144	31	41	Deryck	VKFF-0229	-
0700	9A2CD	14.244	56	57	Con		

VK1	VK2	VK3	VK4	VK5	VK6	VK7	VK8
TIME	CALL	MHz	TX	RX	MODE	QTH	
0707	VK4FDJL	7.144	31	41	SSB	VKFF-0229	-
0700	9A2CD	14.244	56	57	SSB		

Figure 9 – Miscellaneous logger options



If a SOTAwatch spot is tapped the spot info is copied to the relevant fields of the logger screen.

If this option is checked the summit reference is also copied to the QTH field.

If a SOTAwatch spot is tapped the spot info is copied to the relevant fields of the logger screen.

If this option is checked the spot info is also copied to the QSO notes field.

If checked only the latest received spot for each call sign is shown on the SOTAwatch spots list.

*** Only available on mobile phones ***

Six options, located in 5 regions, are available for sending SOTAwatch spots via SMS.

Prior registration is required for gateways marked ** These gateways are managed by third party providers. SMS usage charges may apply.

See www.vk3zpf.com/sota_sms for details

SOTAwatch spot filtering for band and mode.

NOTE: Filtering works by reading the content of each spot received.

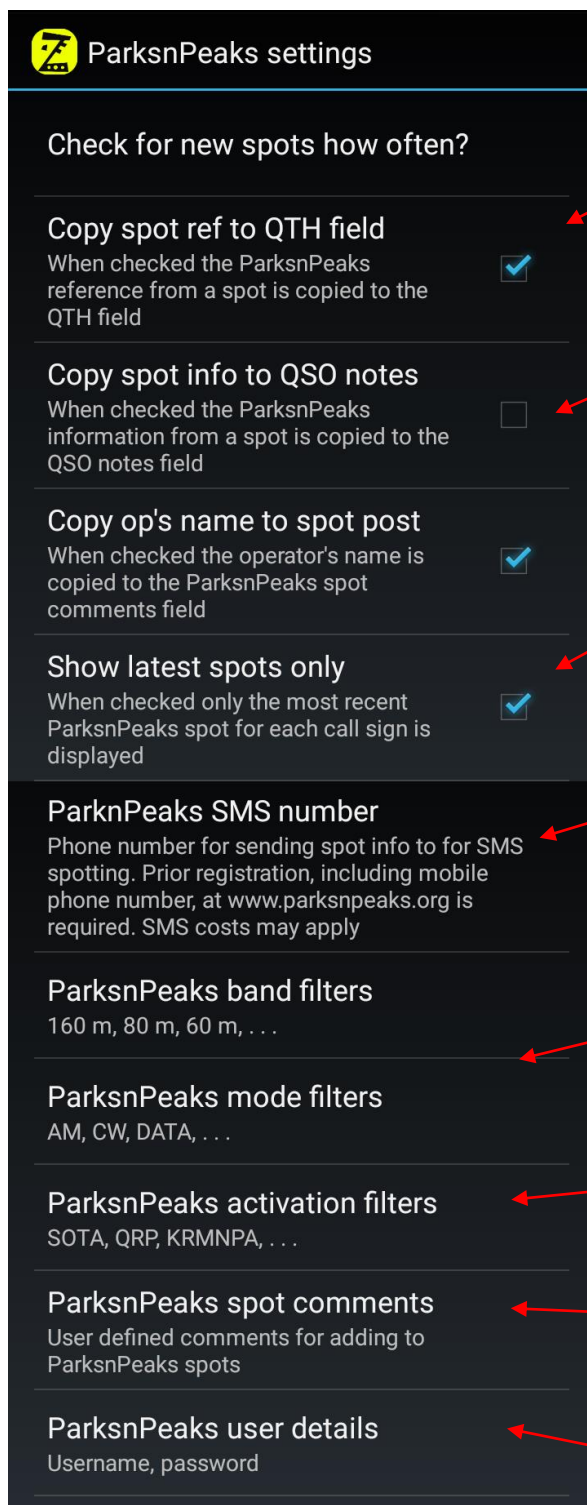
Errors in spot data entered by others may cause some spots not to appear.

Five user defined comments can be pre-saved for adding to SOTAwatch spots.

Comments are accessed by tapping on Comment: in the Post SOTAwatch spot screen

SOTAwatch3 username and password are required for posting spots. See figure 15.

Figure 10 – SOTAwatch settings



If a ParksNPeaks spot is tapped the spot info is copied to the relevant fields on QSO logger screen.

If this option is checked the WWFF and/or SOTA reference is also copied to the QTH field.

If a ParksNPeaks spot is tapped the spot info is copied to the relevant fields on QSO logger screen.

If this option is checked the spot info is also copied to the QSO notes field.

If checked only the latest received spot for each call sign is shown on the ParksPeaks spots list.

*** Only available on mobile phones ***

One gateway, in Australia, is available for sending ParksNPeaks spots via SMS. Prior registration is required at parksneaks.org. This gateway is managed by a third party. SMS usage charges may apply.

ParksNPeaks spot filtering for band and mode.

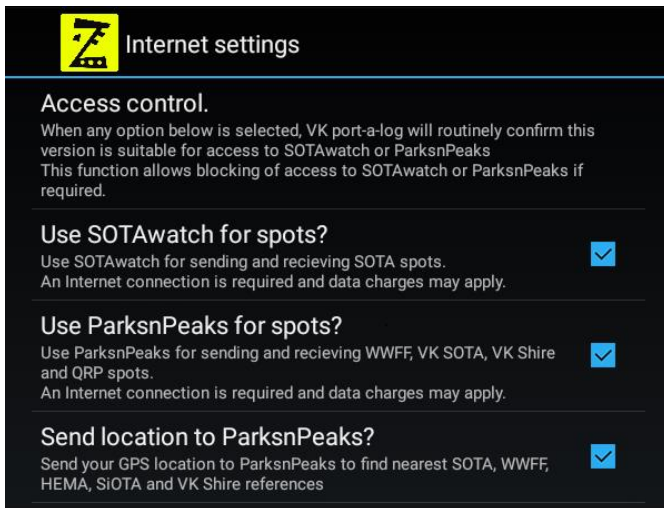
NOTE: Filtering works by reading the content of each spot received. Errors in spot data entered by others may cause some spots not to appear.

Spot filtering for ParksNPeaks activation type: SOTA, QRP, KRMNPA, SANCPA VK & ZL WWFF, VK HEMA, SiOTA and all WWFF spots.

Five user defined comments can be pre-saved for adding to ParksNPeaks spots. Comments are accessed by tapping on Comment: in the Post ParksNPeaks spot screen

ParksNPeaks username and password are required for posting spots. See figure 16.

Figure 11 – ParksNPeaks spot settings



Check boxes to allow VK port-a-log access to the Internet for SOTAwatch and ParksPeaks.

VK port-a-log periodically accesses vk3zpf.com for version verification.

Internet data charges may apply

Figure 12 – Internet permissions



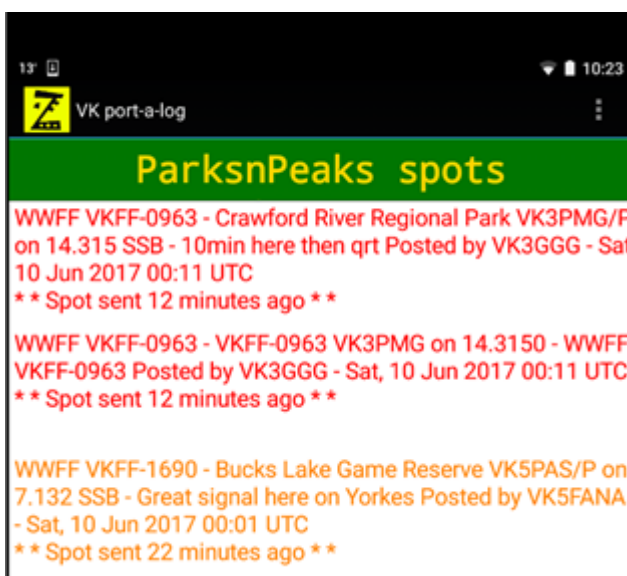
Swipe left or right to move between the following screens;

- ParksPeaks post
- SOTAwatch post
- QSO logging
- SOTAwatch spot
- ParksPeaks spot screens.

Tap on any SOTAwatch or ParksPeaks spot to transfer info to QSO logging screen.

Band, mode and activation type filters are set in 'Spotter settings'.

Figure 13 – SOTAwatch spot screen



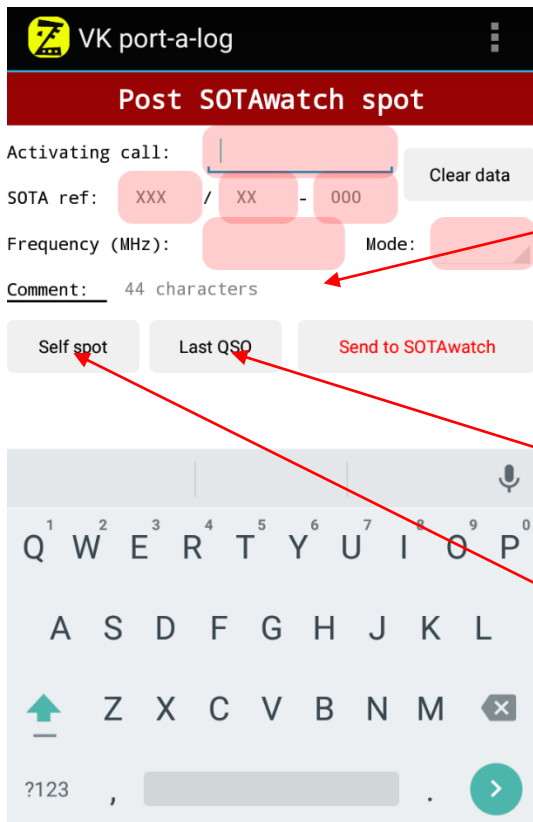
NOTES:

Spot data is sourced from www.sotawatch.org and www.parkspeaks.org

Errors in spot data entered by others may cause some spots not to be shown.

Spots sourced from the WWFF cluster do not contain mode information.

Figure 14 – ParksPeaks spot screen



Enter details to send spot via Internet to SOTAwatch.

Mandatory fields are highlighted.

Comment field is limited to 44 characters

Tap **Comment:** to access pre-saved comments

Send button text changes from red to black after sufficient information is entered.

Tap and hold Send button to send via SMS

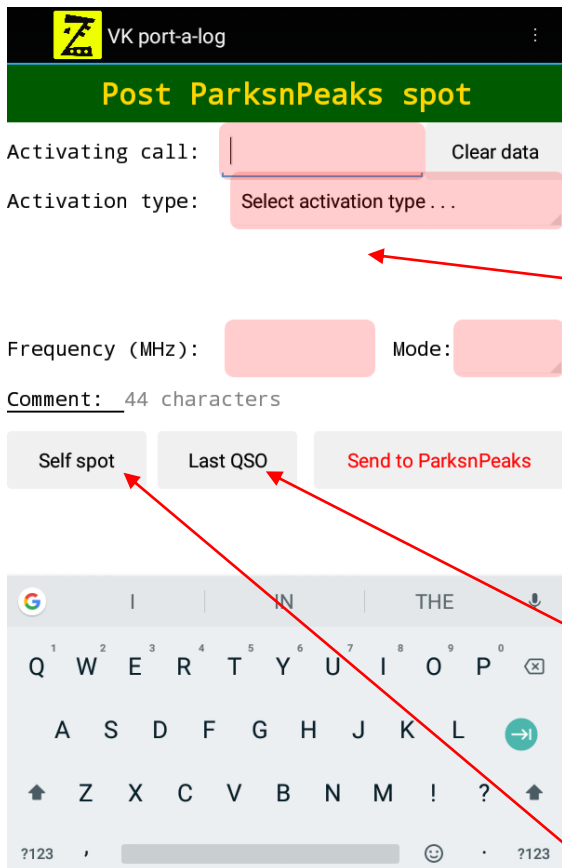
Self spot copies activation details from settings and frequency from QSO logging screen ready to send spot to SOTAwatch.

**** Check all details before sending spot ****

Last QSO copies details from last QSO in log ready to send spot to SOTAwatch.

**** Check all details before sending spot ****

Figure 15 – SOTAwatch post spot screen



Enter details to send spot via Internet to ParksnPeaks.

Activation type, Park, HEMA, SiOTA and VK Shire details can be selected from drop down lists or WWFF , HEMA, SiOTA or VK Shire reference can be entered.

Mandatory fields are highlighted.

Tap **Comment:** to access pre-saved comments

Send button text changes from red to black after sufficient information is entered.

Tap and hold Send button to send via SMS

Last QSO copies details from last QSO in log ready to send spot to ParksnPeaks.

Non-required fields are removed.

**** Check all details before tapping Send ****

Self spot copies activation details from settings and frequency from QSO logging screen ready to send spot to the ParksnPeaks site.

Non-required fields are removed.

**** Check all details before tapping Send ****

Figure 16 – ParksnPeaks post spot screen

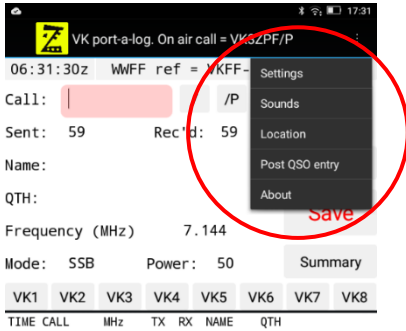
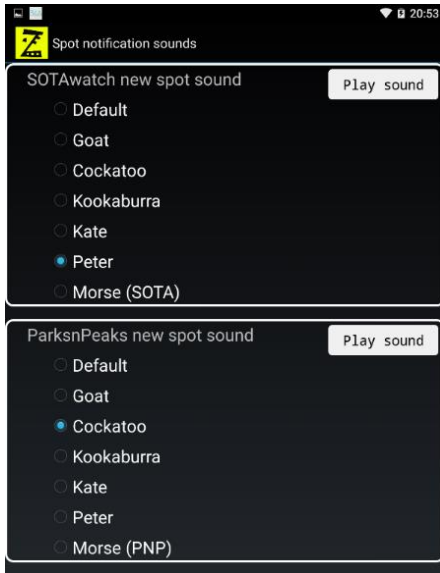


Figure 17 – Menu options

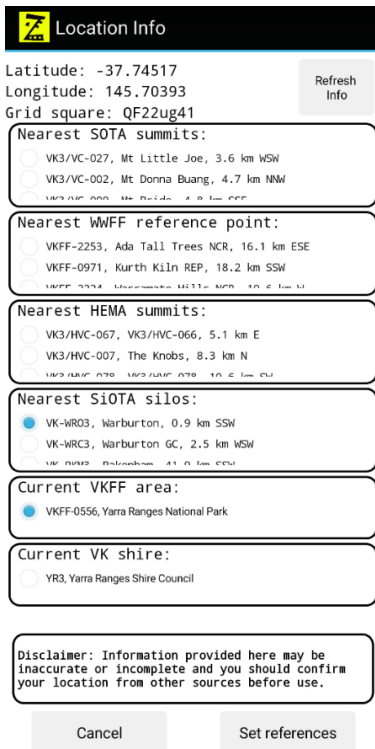


Select notification sound for each new spot being received.

Select different sounds for SOTAwatch and ParksNPeaks

Kate and Peter are text to speech voice announcements.

Figure 18 – Spot notification sounds



When the Location Info page is opened the internal GPS is used to get the current coordinates and the Maidenhead gridsquare is calculated.

If Internet is available, the nearest five SOTA summits, VKFF or NZFF references points, VK HEMA summits, and VK SiOTA silos within 80 km are retrieved.

If the current coordinates are within a VKFF area this is shown separately.

If the current coordinates are within a VK Shire area this is shown separately.

SOTA, WWFF, HEMA, SiOTA and Shire references can be selected and then copied to the activation details by tapping the Set references button.

Figure 19 – Location Info

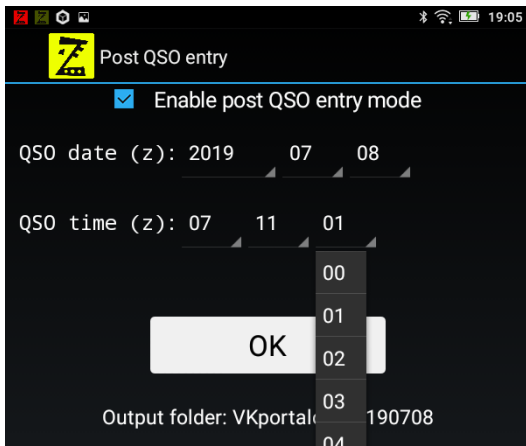


Figure 20 – Post QSO time entry

When **Enable post QSO entry mode** is selected the date and time for the QSO becomes available.

Use the drop-down lists to set the UTC date and time for the QSO. The date will be verified after tapping OK.

After saving each Post QSO entry, the date and time selection screen will return.

Post QSO entries are saved in the folder of the local date that the QSO was made.

The top section of log screen changes to yellow when in Post QSO mode.

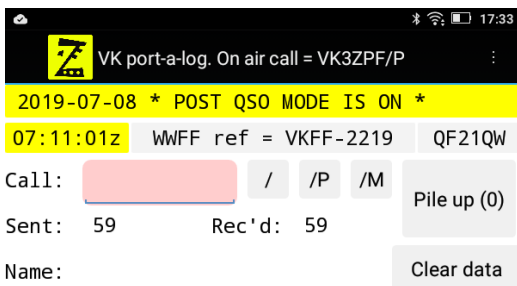
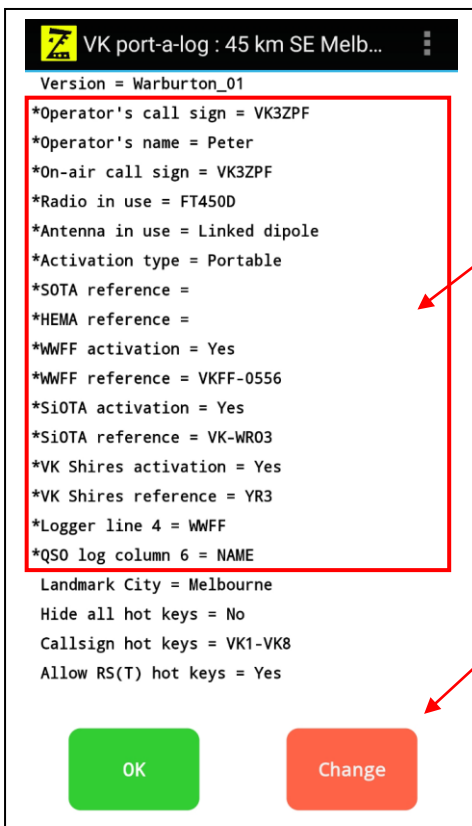


Figure 21 – Post QSO mode entry indication



Tapping an item marked with an asterisk (*) will open the relevant setting box

Tapping Change will open the settings function where all settings can be accessed.

Figure 22 – Start up summary screen

External keyboard short cuts

**** External keyboard may not function correctly with Android Version 8 or above ****

VK port-a-log : 45 km SE Melbourne

10:22:32z VK3/VC-028 VKFF-2187 CS3 QF21QW

Call: VK2IO / /P /M Pile up (0)

Sent: 59 Rec'd: 59

Name: Gerard Clear data

QTH: Save

Frequency (MHz) 7.144

Mode: SSB Power: 100 Summary

<CTRL> C	Clear data
<CTRL> S	Save QSO
<CTRL> <	Scroll left
<CTRL> >	Scroll right
<CTRL> U	Show summary

VK port-a-log

Post SOTAwatch spot

Activating call: Clear data

SOTA ref: / - 000

Frequency (MHz): Mode:

Comment: 44 characters

Self spot Last QSO Send to SOTAwatch

<CTRL> C	Clear data
<CTRL> E	Self spot
<CTRL> L	Last QSO
<CTRL> S	Send spot to SOTAwatch
<CTRL> <	Scroll left
<CTRL> >	Scroll right

VK port-a-log

Post ParksPeaks spot

Activating call: Clear data

Activation type: Select activation type ...

Frequency (MHz): Mode:

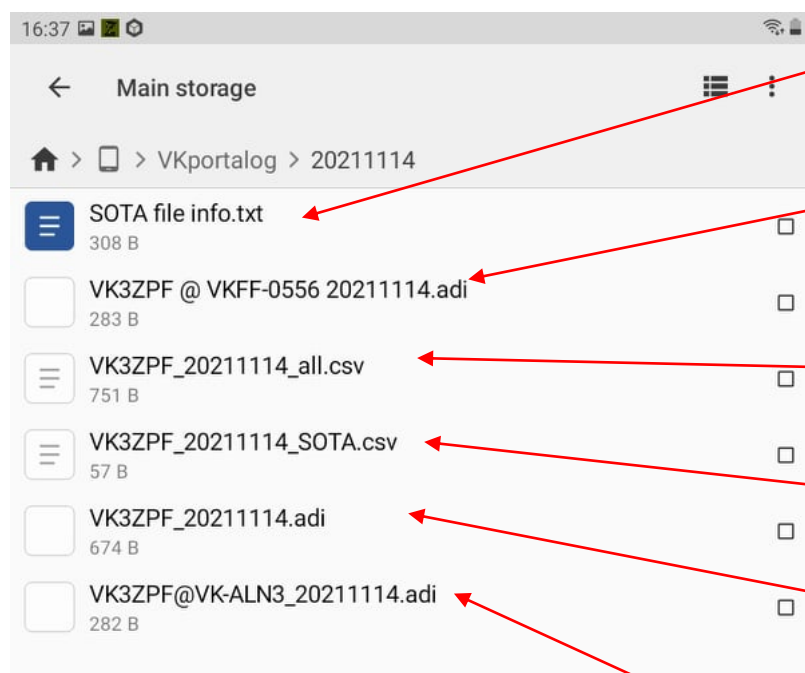
Comment: 44 characters

Self spot Last QSO Send to ParksPeaks

<CTRL> C	Clear data
<CTRL> E	Self spot
<CTRL> L	Last QSO
<CTRL> S	Send spot to Parkspeaks
<CTRL> <	Scroll left
<CTRL> >	Scroll right

Log files are saved on the device at **Main storage/VKportallog/yyyymmdd** – new folder and files are made for each local day.

Log files can be copied or shared using third party apps such as Cx File Explorer



SOTA file info.txt A brief explanation about SOTA activator and chaser files

ADIF file ready for upload to Logsearch by your local WWFF coordinator. Contains only QSOs made from the WWFF reference mentioned in file name.

CSV file containing all the data for the local day – Can be opened in Excel. Not suitable for upload to SOTAdat.

SOTA CSV file with all SOTA QSOs ready for upload to www.sotadata.org.uk

ADIF file ready for import to third party logging software. Contains all QSOs for the local day.

ADIF file ready for upload to SiOTA database at www.silosontheair.com Contains only QSOs made from the SiOTA reference area mentioned in file name.

Note: As of November 2021;

- WWFF does not require hunter logs for upload
- VK Shires does not have a defined logging format
- KRMNPA does not have a defined logging format
- SANPCPA does not have a defined logging format
- HEMA does not have a defined logging format

For the latest info visit www.vk3zpf.com/vk-port-a-log